



HUNTERS[®]
HERE TO GET *you* THERE



Suffolk Avenue, Southampton

Per Calendar Month £1,400 Per Calendar Month



Three bedroom ground floor flat, offering generous living space and modern comforts throughout. The property features a bright and airy lounge with large windows that invite plenty of natural light, creating an inviting space to relax or entertain. The well equipped kitchen provides ample storage and worktop space, perfect for everyday cooking.

Each of the three bedrooms is generously sized. The contemporary bathroom includes a sleek suite with both bath and shower options.

Outside, the flat benefits from convenient ground-floor access and a pleasant outdoor area that can be enjoyed year round. Additional features include gas central heating, double glazing, and excellent storage.

Ideally located close to local shops, schools, and transport links, this home is perfect for those seeking comfortable and practical living in a desirable neighbourhood.

**** First come first serve basis parking for one car ****

38 Bedford Place, Southampton, Hampshire, SO15 2DG | 02380 987 720
southampton@hunters.com | www.hunters.com

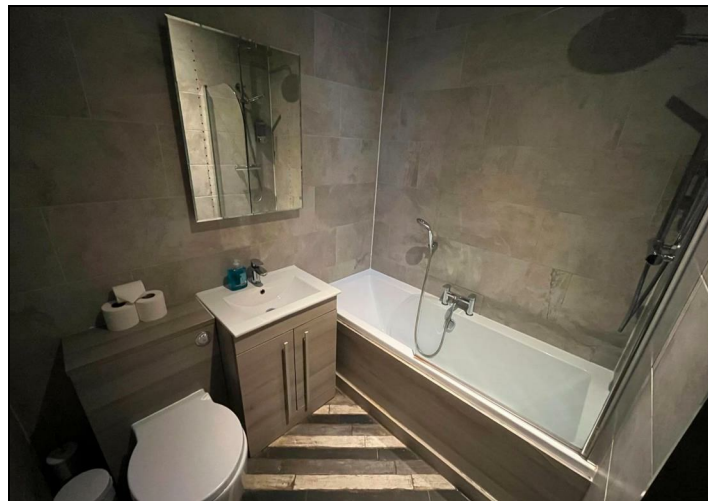


This Hunters business is independently owned and operated by Clegg Properties Ltd | Registered Address 27 Westfield Road, Lymington, Hampshire, England, SO41 3PZ | Registered Number: 06421594 England and Wales | VAT No: 188 0548 76 with the written consent of Hunters Franchising Limited.

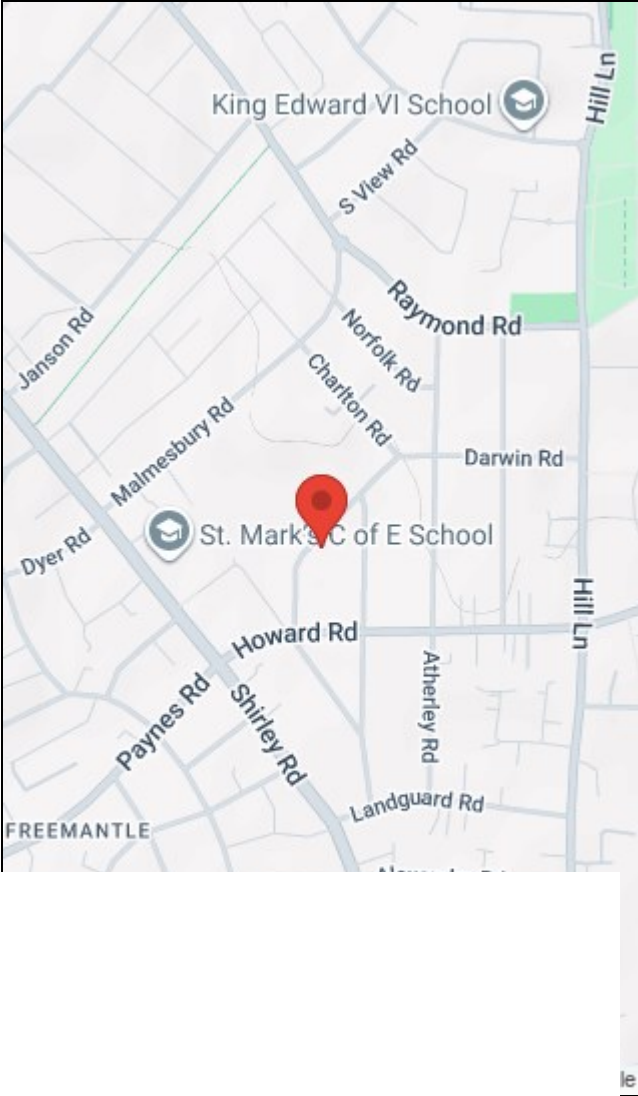
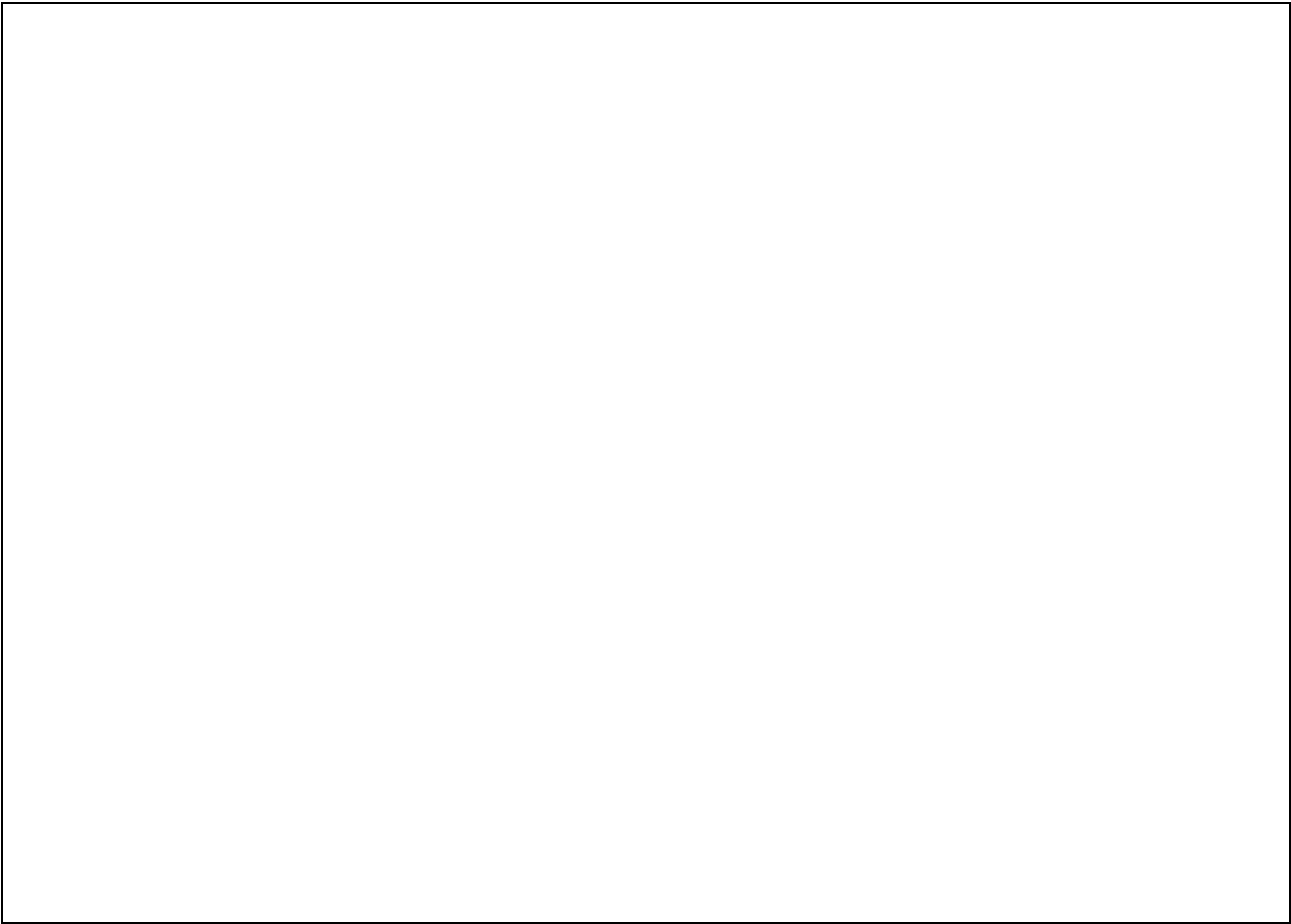


KEY FEATURES

- Available now
- Ground floor flat
- Three bedrooms
- Fully furnished
- One bathroom
- Gas central heating
- Outside space
- First come first serve basis parking for one car







Energy Efficiency Rating		
	Current	Potential
Very energy efficient - lower running costs		
(92 plus) A		
(81-91) B		
(69-80) C		
(55-68) D		
(39-54) E		
(21-38) F		
(1-20) G		
Not energy efficient - higher running costs		
	59	73
England & Wales		
EU Directive 2002/91/EC		

Environmental Impact (CO ₂) Rating		
	Current	Potential
Very environmentally friendly - lower CO ₂ emissions		
(92 plus) A		
(81-91) B		
(69-80) C		
(55-68) D		
(39-54) E		
(21-38) F		
(1-20) G		
Not environmentally friendly - higher CO ₂ emissions		
England & Wales		
EU Directive 2002/91/EC		

38 Bedford Place, Southampton, Hampshire, SO15 2DG | 02380 987 720
southampton@hunters.com | www.hunters.com



This Hunters business is independently owned and operated by Clegg Properties Ltd | Registered Address 27 Westfield Road, Lymington, Hampshire, England, SO41 3PZ | Registered Number: 06421594 England and Wales | VAT No: 188 0548 76 with the written consent of Hunters Franchising Limited.